

BITTEL AMERICAS

GUEST-ROOM TECHNOLOGY CATALOG



A COMPANY YOU CAN TRUST



MODA-BM3-CL1



BM3-CL1-TW3

SPEAKERPHONE MODULE

- High-performance speakerphone.
- Message waiting indicator.
- Customized faceplate.
- 4 guest service keys.
- Wireless charging.
- Can be used stand alone or with optional handset
- Optional handset
 - Corded and cordless handset option
 - 3 guest service keys on handset.

Part #: TW3

CLOCK MODULE

- TruTime ensures clock time is always correct. Improves guest satisfaction and reduces housekeeping hours.
- Auto-dimming with an ambient light sensor
- Single day alarm
- Automatic daylight savings adjustment.
- Optional battery backup for, \$4.90, keeps display visible up to 24 hours.
- Battery backup for time ensures the time is always correct even if unplugged for years.
- Supports IR remote for easy adjustment of clock and calendar.

Part #: CL1



BM3-BT1-CL1-TW4-HS2

FM RADIO/BLUETOOTH

- Bluetooth 5 compatible.
- MODA specific pairing ID; upon request activate (push button) or voice command * Requires MODA voice recognition module.*
- Non-active timeout after 20 minutes of inactivity.
- FM radio quick scan through frequencies.

Part #: BT1

VOICE RECOGNITION MODULE

- All MODA modules are "voice ready" and designed to work with voice recognition technology.
- Ready to accept Amazon Alexa Dot, or Google Home products providing power and internal connection to MODA modules.
- MODA product specialist are actively updating "skills" expanding the VR technology support.

Part #: VR1

CHARGER MODULE

- Optional wireless charging module added to upper stack.
- Convenient charging cables magnetically attached for Apple and USB-C devices.
- 2 USB ports (5V, 2.1A).
- 1 USB-C port (5V, 2.1A).

Part #: BM3



MODA CAST

DESIGN BY JACOB JENSEN

CHARGING MODULE

- Optional wireless charging module added to upper stack
- Convenient charging cables magnetically attached for Apple and USB-C devices. 2 USB ports (5V, 2.1A).
- 1 USB-C port (5V, 2.1A).
- HDMI input for laptop or gaming console.

WIRED VIDEO MODULE

- Plug and play autosensing video input automatically turns the TV on and inputs selection.
- Apple video adapter cable for screen mirroring of your lightning compatible iPhone, and iPad device.
- USB-C video adapter cable for screen mirroring of your Samsung S8/S9 or display port for compatible devices.
- Video cables magnetically attached for convenient management.

INPUT MODULE

- Provide soft touch control of selected input (HDMI, Apple, USB-C, Casting, Back to TV)

CASTING MODULE

- Provides Chromecast module for wireless content streaming.



POPULAR STACKS





1
 GH 4 ABC 2 DEF 3
 PQRS 7 JKL 5 MNO 6
 TONE* TUV 8 WXYZ 9
 HOLD OPER 0 #
 MUTE
 ALARM SET ALARM ON/OFF
 REDIAL
 SPKR

BRIGHTNESS
SNOOZE

Bluetooth

G
 Geary Parkway Hotel
 4750 Geary Boulevard
 San Francisco, CA 94118
 Phone: 415-752-4406
 Fax: 415-422-0566
 WWW.GEARYPARKWAYHOTEL.COM
 ROOM TO ROOM LOCAL CALLS
 9 + 1 + Area Code + Number
 FRONT DESK
 TRANSPORTATION
 DORNOVO'S PIZZA
 EMERGENCY
 MESSAGES

LINE IN
 RADIO
 TUNING -
 TUNING +

3:47 PM

UNOMedia5

CORDED & CORDLESS



UM7712-5B



UM7711-5B

TELEPHONE FEATURES (DECT)

- Available in analog and SIP
- 5 or 10 guest service keys.
- High quality speakerphone.
- Music "muted" while on the call.
- DECT 6.0 technology for clear sound.
- Full duplex speakerphone on handset and base of up to 4 additional handsets.

ALARM CLOCK AND AUDIO FEATURES

- TruTime ensures clock time is always correct. Improves guest satisfaction and reduces housekeeping hours.
- High-quality stereo speakers.
- NFC enabled Bluetooth.
- Audio input/cable connector.
- Easy to use alarm/radio with any key snooze.
- Single day alarm, 10-minute duration.
- Auto ascending alarm volume.
- Rechargeable battery for "always on" clock.

TELEPHONE FEATURES (CORDED)

- Available in analog or SIP.
- 5 or 10 guest service keys.
- High-quality speakerphone
- Music "muted" while on the call

ALARM CLOCK AND AUDIO FEATURES

- TruTime ensures clock time is always correct. Improves guest satisfaction and reduces housekeeping hours.
- High-quality stereo speakers.
- NFC enabled Bluetooth.
- Audio input/cable connector.
- Easy to use alarm/radio with any key snooze.
- Single day alarm, 10-minute duration.
- Auto ascending alarm volume.
- Rechargeable battery for "always on" clock.

DEVICE CHARGING

- 7 charging positions
- 4 rapid high-powered USB ports.
- Multi-Function Cable
 - (Lightning, Micro-USB, USB-C, Audio Connector)
- Qi compatible wireless charging (optional)



UNOMedia5

SLIM



UM7711C

TELEPHONE FEATURES

- Available in analog and SIP
- Slimline phone model with dial pad on handset.
- 3 guest service buttons on the handset
- Music "muted" while on the call.

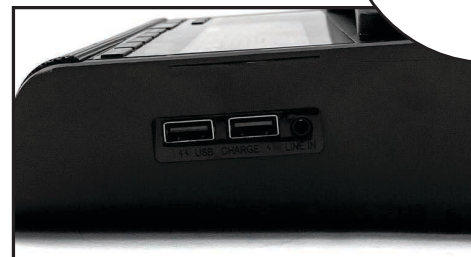
ALARM CLOCK AND AUDIO FEATURES

- TruTime ensures clock time is always correct. Improves guest satisfaction and reduces housekeeping hours.
- High-quality stereo speakers.
- NFC enabled Bluetooth.
- Audio input/cable connector.
- Easy to use alarm/radio with any key snooze.
- Single day alarm, 10-minute duration.
- Auto ascending alarm volume.
- Rechargeable battery for "always on" clock.



DEVICE CHARGING

- 7 charging positions
- 4 rapid high-powered USB ports.
- Multi-Function Cable
 - o (Lightning, Micro-USB, USB-C, Audio Connector)
- Qi compatible wireless charging (optional)





JACOB JENSEN

HT60

DESIGN BY JACOB JENSEN



HT60

HT60 FEATURES

- Available in analog or SIP
- Single line
- 8 guest service keys.
- Caller ID display (analog only).
- Color options available to match designer preference.
- Desk or wall mountable.

Part #: HT60



HT60-C2

HT60 C2 FEATURES

- Available in analog or SIP
- Single line
- 8 guest service keys.
- Caller ID display (analog only).
- Corded base with HS20D remote cordless handset and charging cradle.
- Color options available to match designer preference.
- Desk or wall mountable.

Part #: HT60



HT20

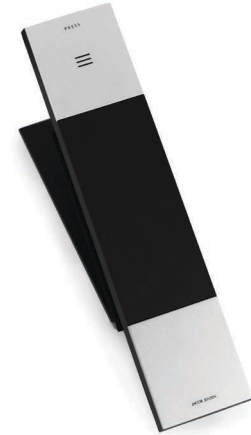
DESIGN BY JACOB JENSEN



HT20



Color Options



HT20D

HT20 FEATURES

- Available in analog or SIP
- Single line
- Keypad on the handset.
- 1 guest service button on the handset.
- Adjustable handset volume.
- Message and ringing indicator.
- Desktop and wall mountable.
- Color options available to match designer preference.

Part #: HT20

HT20D FEATURES

- Available in analog or SIP (DECT PLUS only)
- Single line
- HT20 DECT 6.0 technology.
- Keypad on the handset.
- 3 programmable guest service buttons on the handset.
- Adjustable handset/speaker volume.
- Voice message waiting indicator.
- Low battery indicator.
- Indoor range 50m.
- Connect up to 5 HS20D remote handsets/cradles.
- Desktop and wall mountable.
- Color options available to match designer preference.

Part #: HT20D



NEO

CORDED



TELEPHONE FEATURES

- 62 single line speakerphone.
- Available in analog or SIP
- Available in black or ivory.
- Available in a curved or flat handset. Flat handset available in multiple colors, (black, red, silver, orange, and blue)
- 0,3,5, or 10 guest service keys.
- Compatible with all major PBX's.
- Full length faceplates for hotel name/ logo and dialing instructions.
- ProGard Moisture Resistance.
- Electronic/Magnetic switch hook.
- Programmable message waiting light button.



DEVICE CHARGING (OPTIONAL)

- 6 charging positions
- 2 rapid high-powered USB ports.
- Multi-Connection Cable (optional)
 - o (Lightning, (2) Micro-USB, USB-C,)

Part#: CGR-NEO-MCC
CGR-NEO-USB

Pictured left to right
Part#:HA62TSD-5S-CURVED
Part#:HA62TSD-10S
Part#:HA62TSD-10S-Silver



NEO

IVORY



TELEPHONE FEATURES

- 62 single line speakerphone.
- Available in analog or SIP
- Available in black or ivory.
- Available in a curved or flat handset. Flat handset available in multiple colors, (black, red, silver, orange, and blue)
- 0,3,5, or 10 guest service keys.
- Compatible with all major PBX's.
- Full length faceplates for hotel name/ logo and dialing instructions.
- ProGard Moisture Resistance.
- Electronic/Magnetic switch hook.
- Programmable message waiting light button.

DEVICE CHARGING (OPTIONAL)

- 6 charging positions
- 2 rapid high-powered USB ports.
- Multi-Connection Cable (optional)
 - o (Lightning, (2) Micro-USB, USB-C,)

Part#: CGR-NEO-MCC
CGR-NEO-USB

NEO

DECT



TELEPHONE FEATURES

- 62 single line speakerphone.
- Available in analog or SIP.
- Available in black or ivory.
- DECT 6.0 technology for clear sound.
- Dynamic transmit power for extended battery life.
- Full duplex speakerphone on the base & handset.
- Automatic or manual handset registration up to 5 additional handsets.
- Available in a curved or flat handset. Flat handset available in black or silver)
- 3,5, or 10 guest service keys.
- Compatible with all major PBX's.
- Full length faceplates for hotel name/ logo and dialing instructions.
- ProGard Moisture Resistance.
- Electronic/Magnetic switch hook.
- Programmable message waiting light button.

DEVICE CHARGING (OPTIONAL)

- 6 charging positions
- 2 rapid high-powered USB ports.
- Multi-Connection Cable (optional)
 - (Lightning, (2) Micro-USB, USB-C,)

Part#: CGR-NEO-MCC
CGR-NEO-USB

HWD62TSD-10S-Curved
HWD62TSD-5S
HWD62TSD-5S-Silver



NEO C2



HWD62TSD-C2-5S

TELEPHONE FEATURES

- 62 single line speakerphone.
- Corded handset works without power for lifeline support.
- Includes 7715ZJ aux handset.
- Available in analog or SIP.
- Available in black or ivory.
- Automatic or manual handset registration up to 5 additional handsets.
- Available in a curved or flat handset. Flat handset available in black or silver)
- 3,5, or 10 guest service keys.
- Compatible with all major PBX's.
- Full length faceplates for hotel name/ logo and dialing instructions.
- ProGard Moisture Resistance.
- Electronic/Magnetic switch hook.
- Programmable message waiting light button.

DEVICE CHARGING (OPTIONAL)

- 6 charging positions
- 2 rapid high-powered USB ports.
- Multi-Connection Cable (optional)
 - (Lightning, (2) Micro-USB, USB-C,)

Part#: CGR-NEO-MCC
CGR-NEO-USB





77 Series

DECT MINI/MINI PLUS



Part #: 7715



Part #: 7715-Plus

DECT MINI FEATURES

- Industry's smallest footprint completely cordless.
- Available in analog or SIP
- Single line
- DECT 6.0 technology for clear sound.
- Dynamic transmit power for extended battery life.
- Automatic or manual handset registration of up to 4 additional handsets.
- Battery backup (optional) 5-year warranty.
- Available in black & ivory.
- ProGard Moisture Resistance.
- Analog only: 6 guest service buttons (3 on handset 3 on base)
- SIP: 3 guest service buttons on handset only.

DEVICE CHARGING (OPTIONAL)

- 6 charging positions
- 2 rapid high-powered USB ports.
- Multi-Connection Cable (optional)
 - (Lightning, (2) Micro-USB, USB-C,)

Part#: CGR-77-MCC
CGR-77-USB



DECT MINI PLUS FEATURES

- Industry's smallest footprint completely cordless.
- Available in analog or SIP
- Single line
- DECT controller contained in a separate box for flexible installation.
- 77 DECT shipped with 77 Charge Dock
- DECT 6.0 technology for clear sound.
- Dynamic transmit power for extended battery life.
- Automatic or manual handset registration of up to 4 additional handsets.
- Battery backup (optional) 5-year warranty.
- Available in black & ivory.
- ProGard Moisture Resistance.
- Analog only: 6 guest service buttons (3 on handset 3 on base)
- SIP: 3 guest service buttons on handset only.



77 Series

SLIM



7713M-LP



7713-WM



TELEPHONE FEATURES

- Single line
- Available in analog or SIP
- Available in black or ivory.
- 3 guest service buttons on the handset.
- Magnetic hook switch ensures durability.

DEVICE CHARGING (OPTIONAL)

- 6 charging positions
- 2 rapid high-powered USB ports.
- Multi-Connection Cable (optional)
 - (Lightning, (2) Micro-USB, USB-C,)

Part#: CGR-77-MCC
CGR-77-USB



Classic Products



HA12TSD-6S



HA12TSD-6S



UNOAS-BP

12 SERIES TELEPHONE FEATURES

- Single line
- Speakerphone
- Message waiting indicator
- Labeled function keys
- Hold, flash, redial
- Available in black or cream
- Industrial quality manufacturing
- 3, or 6 guest service keys
- Compatible with all major PBX's
- Full length faceplates for hotel name/ logo and dialing instructions
- Clean design appearance
- Full 2-year warranty

38 SERIES TELEPHONE FEATURES

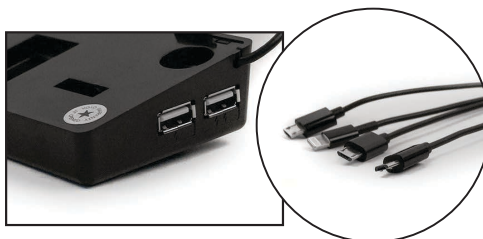
- Available in single line and two line configuration
- Optional speakerphone
- Programmable message waiting indicator
- Labeled function keys
- Hold, flash, redial
- Available in black or cream
- Industrial quality manufacturing
- 0,3,5 or 10 guest service keys
- Compatible with all major PBX's
- Full length faceplates for hotel name/ logo and dialing instructions
- Clean design appearance
- Full 2-year warranty

UNOVOICE TELEPHONE FEATURES

- Available in single line and two line configuration
- DECT corded and cordless models
- Available in analog or SIP
- Optional speakerphone
- Programmable message waiting indicator
- Labeled function keys
- Hold, flash, redial, mute
- Available in black or cream
- Industrial quality manufacturing
- 0,5, or 10 guest service keys
- Compatible with all major PBX's
- Simplified faceplate design and printing. Enhanced design aesthetic complements guest-room interior design.
- Clean design appearance
- Full 5-year warranty

DEVICE CHARGING FOR ALL DEVICES (OPTIONAL)

- 6 charging positions
- 2 rapid high-powered USB ports.
- Multi-Connection Cable (optional)
 - (Lightning, (2) Micro-USB, USB-C,)



MediaJack



MediaJack-C



MediaJack-G

MEDIAJACK-C FEATURES

- Two high powered, fast charging USB ports
- Two AC outlets available in US or international configuration
- Optional switches allowing control of night stand or ambient lights
- Brushed metal surface that is sleek and easy to clean
- Clean, simple, customizable panel
- Available in both black and silver brushed metal

MEDIAJACK-G FEATURES

- Two high powered, fast charging USB ports
- Two AC outlets available in US or international configuration
- Available Ethernet, Bluetooth, HDMI connections
- Brushed metal surface that is sleek and easy to clean
- Clean, simple, customizable panel
- Available in both black and silver brushed metal

CONTACT US



1722 Little Orchard Street, San Jose, CA 95125 | T: 1.888.9.BITTEL | sales@bittelamericas.com | www.bittelamericas.com

